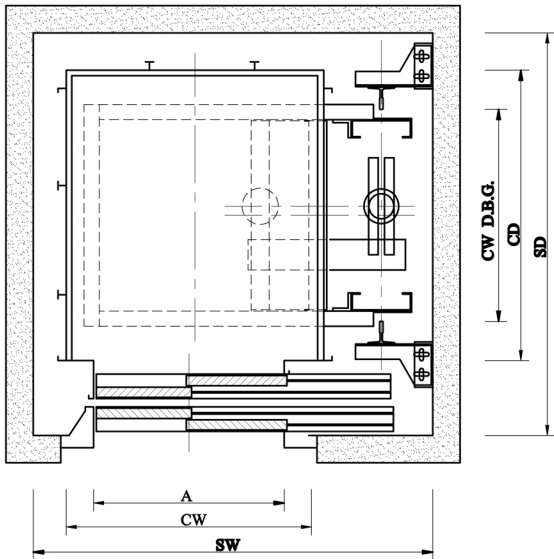


# HYDRAULIC LIFT



Persons	Kg	A	CW	CD	SW	SD
4	320	700	<b>900</b>	<b>1000</b>	<b>1350</b>	<b>1400</b>
6	480	800	1100	1150	1600	1550
<b>8</b>	<b>640</b>	<b>800</b>	<b>1100</b>	<b>1400</b>	<b>1600</b>	<b>1800</b>
10	800	800	1200	1550	1750	1950
13	1040	900	1300	1800	1850	2200
16	1280	1000	1350	2100	1900	2500